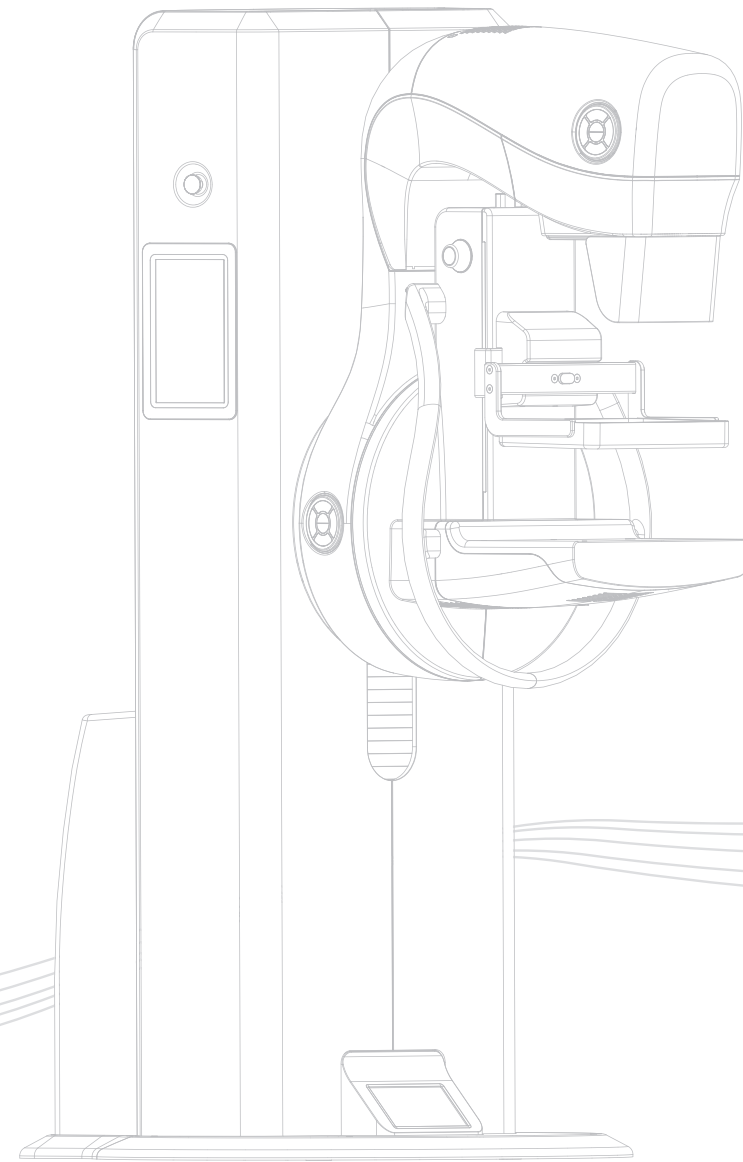


” CARE YOUR CONCERN



# Navigator Series Generation 3<sup>rd</sup>

Digital Mammography X-Ray System

THE  
**DRAKE**  
BUSINESS GROUP  
CORPORATION

(02) 8463 4943 | (02) 8463 5120  
(+63) 939 911 9277



Drake Marketing and  
Equipment Corporation

1052 Benigno Aquino Avenue, Sitio 2  
Bahay Pare, Candaba, Pampanga  
Philippines, 2013



Drake Calibration  
Laboratory Philippines

Philippines, 2013

information@drakephilippines.com



Erpel Konstrukt  
Konzern Corporation

176 Benigno Aquino Avenue, Sitio 2  
Bahay Pare, Candaba, Pampanga  
Philippines, 2013



Urossorsa Marketing and  
Equipment Corporation





## Brief Introduction

Established in March 2007, Sino Medical-Device Technology Co., Ltd. have been honored as a national-level high-tech enterprise, a national-level SRDI (Specialized,Refinement; Differential and Innovation)"little giant" enterprise, as well as a core enterprise of the national high-end medical equipment manufacturing cluster.As the leader in breast imaging and integrated solutions of breast health, we have been awarded dozens of domestic and overseas patents. The Navigator series digital mammography system developed by Sino Medical was registered in August 2011, which is the first one Digital mammography in China . It also was evaluated as a “national key new product” by four ministries including the Ministry of Science and Technology of China, and achieved Shenzhen Science and Technology Progress Award. We are featuring as one of drafting units of the national mammography industry standard.

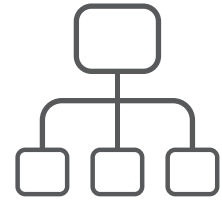
For many years, Sino Medical we are keeping invest more than 15% of the company's revenue and with over 30% of our personnel are dedicated in the R&D. Until now, we have established high-end Mammography imaging diagnostic equipment technology center in Shenzhen, digital mammography industrialization base, and academician workstation , as well as other high-end research and development and manufacturing facilities, thanks to strong R&D and innovation capabilities. So far, the products have been installed and used in more than 80 countries and regions, winning trustness of customers all over the world.



## The 3rd Generation Navigator Series Digital Mammography System

With 14 years of technical accumulation in over 1000 installations of mammography , we have created a new design for high-end breast imaging mammography with features:

-  Elegant design
-  Humanized design
-  HD Low Dose
-  Innovative technology



### Four-screen sincronization, everything under control

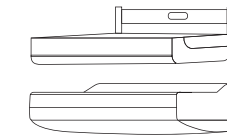
- 10.1" dual-side large-size touch screen, with quick set of customized parameters
- Base display screen, compression paddle display screen, allows multi-angle and multi-directional display of compression parameters, status and info



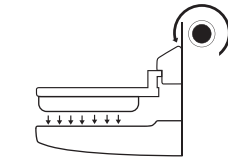
### One click to position

One-click to reach the desired position, fast experiences

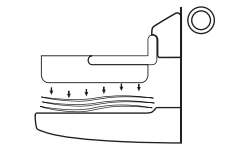
### Humanized Ergonomic Design



Arc streamlined design for Compression paddle and table

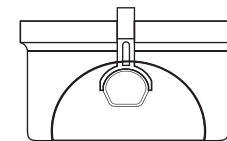


Micro-adjustment knob for compression

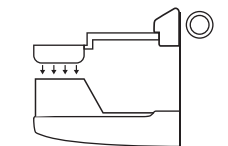


Multi-level intelligent flexible compression system

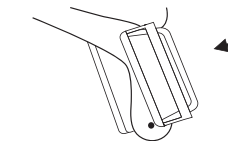
### Rich portfolio of Compression paddles



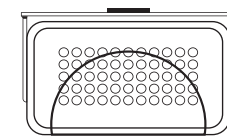
Spot Exposure mode , for easier detection of Early stage cancer and microcarcinoma



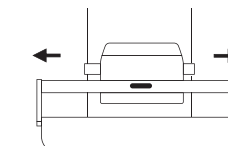
Magnification Exposure mode



Axillary Exposure mode



Biopsy Location Exposure mode



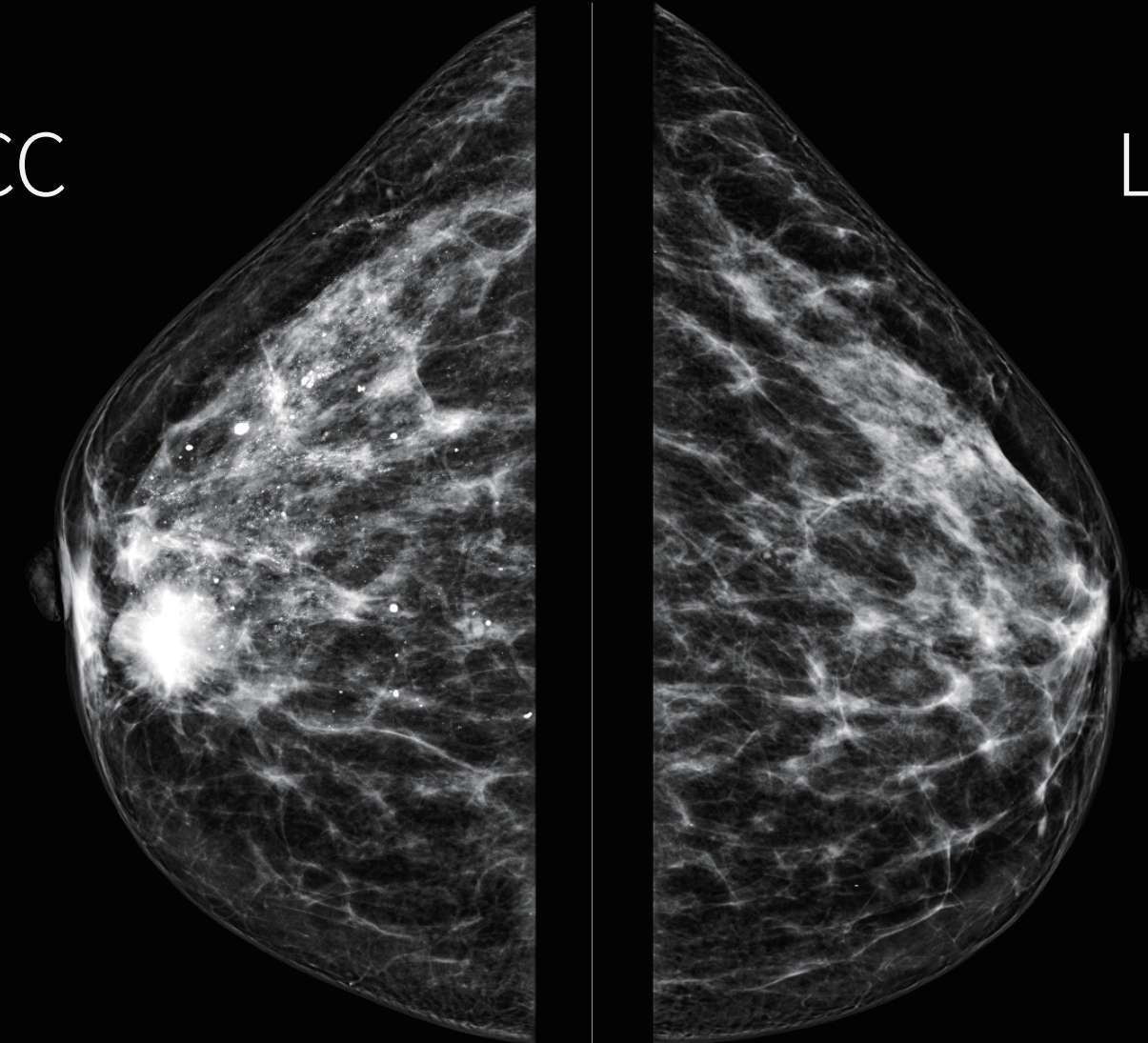
Unique Side movement of allows increasement up to 20mm of armpit area, and other areas which is easy to miss.

## TIDE imaging technology creates high resolution with low radiation dose

With the T-I-D-E technology, the radiation dose can lower down up to 54% of the one of traditional molybdenum Exposure

- T** Tungsten Target Tube
- I** Intelligent Auto Exposure Control
- D** High-Performance Full-Field Dynamic Flat Panel Detector
- E** Excellent Image Post-Processing System

RCC



LCC

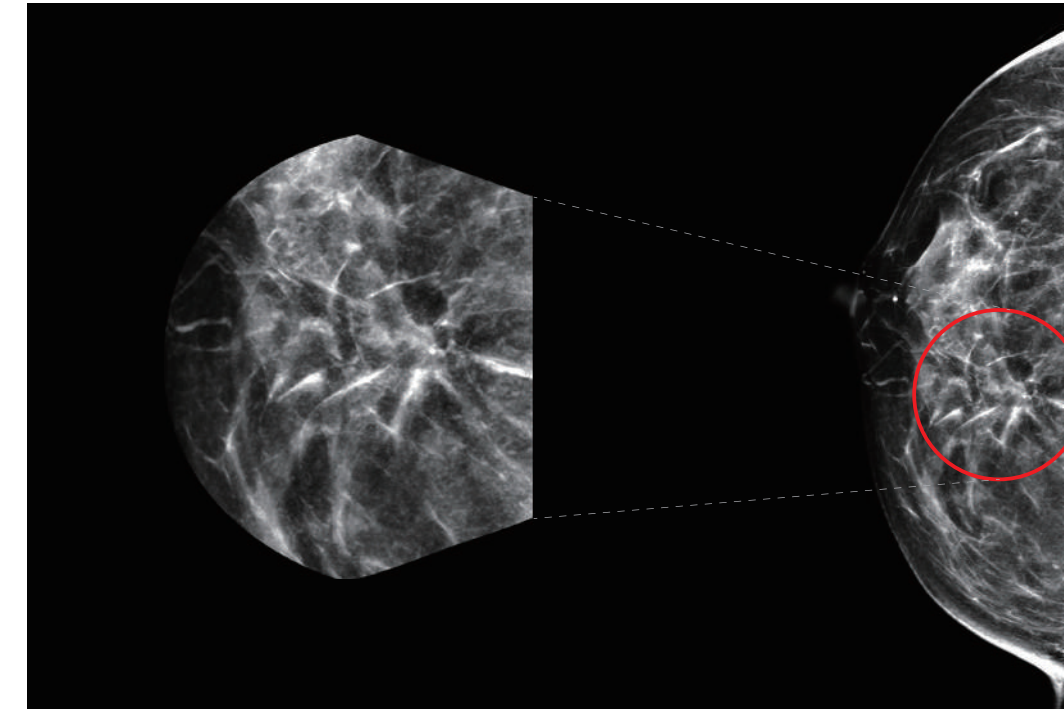
## Dual angle range exposure

Rich image layers leads to clearer shape of lesion

- ∠  $\pm 7.5^\circ$  Fast screening mode  
Shorten the scanning and compression time, suitable for outpatient mammography
- ∠  $\pm 20^\circ$  Fine diagnosis mode  
Higher resolution, suitable for breast disease inspection

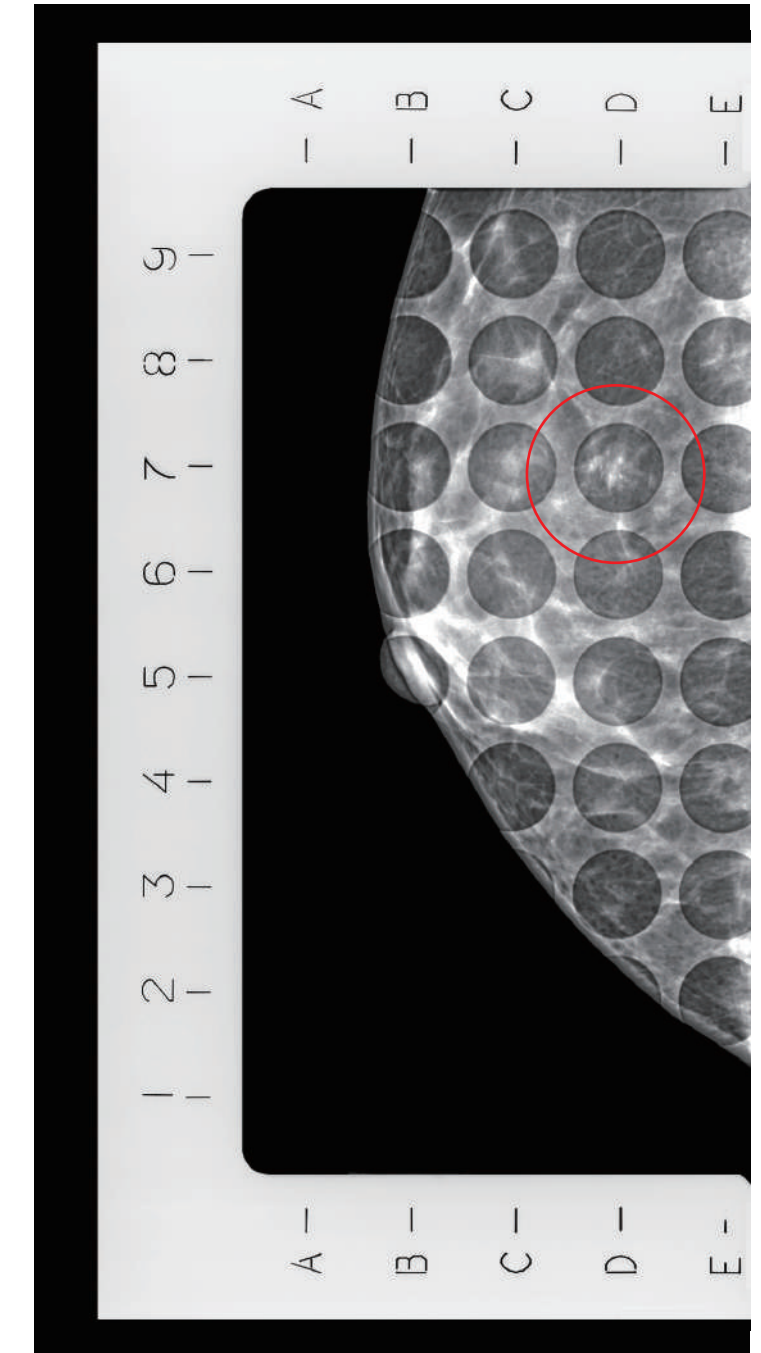


## Leading technology in industry Multi exposure modes



2D biopsy mode (right)

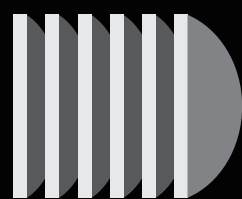
Spot/Mag Spot exposure mode (left)



## Multi Exposure modes



FFDM mode



TOMO mode

**COMBO**

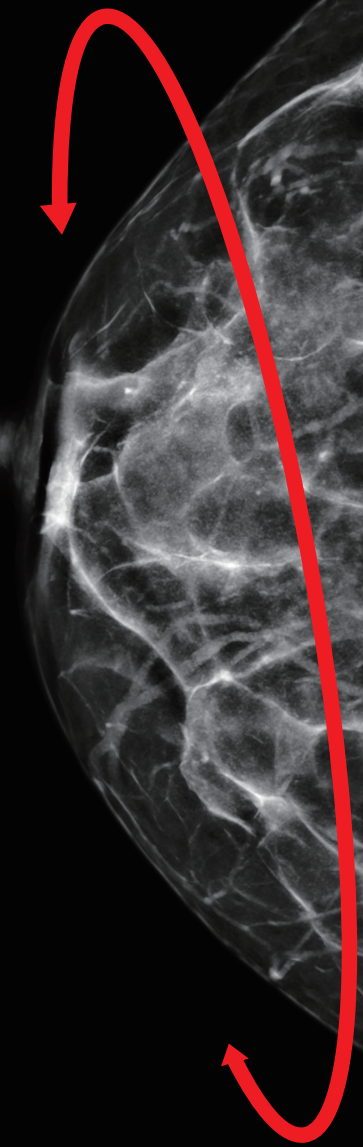
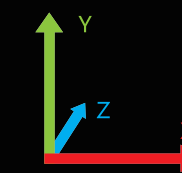
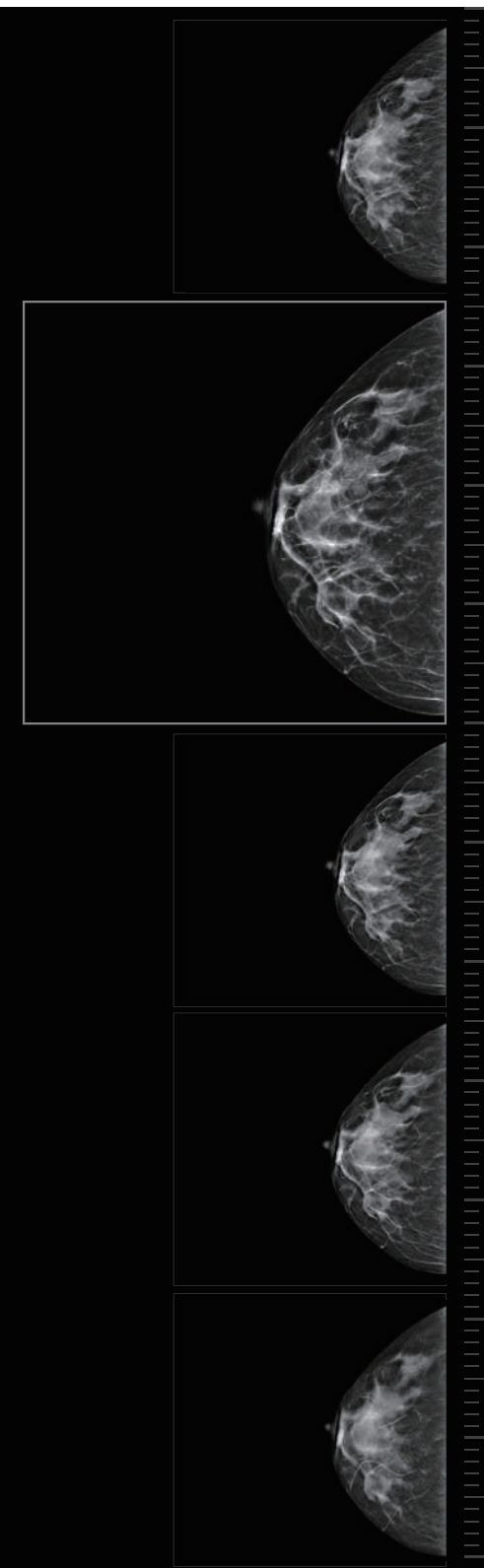
FFDM+TOMO



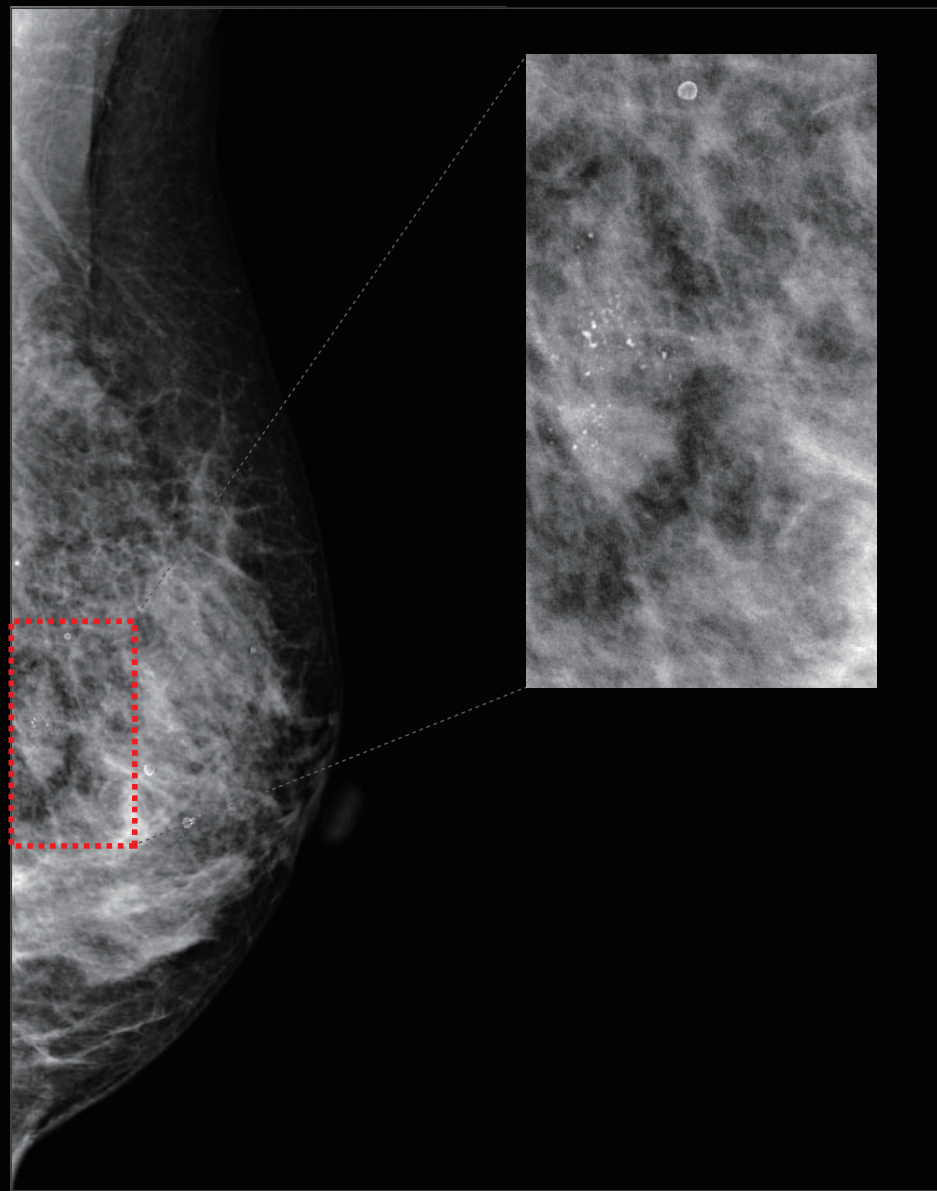
FFDM- 2D images



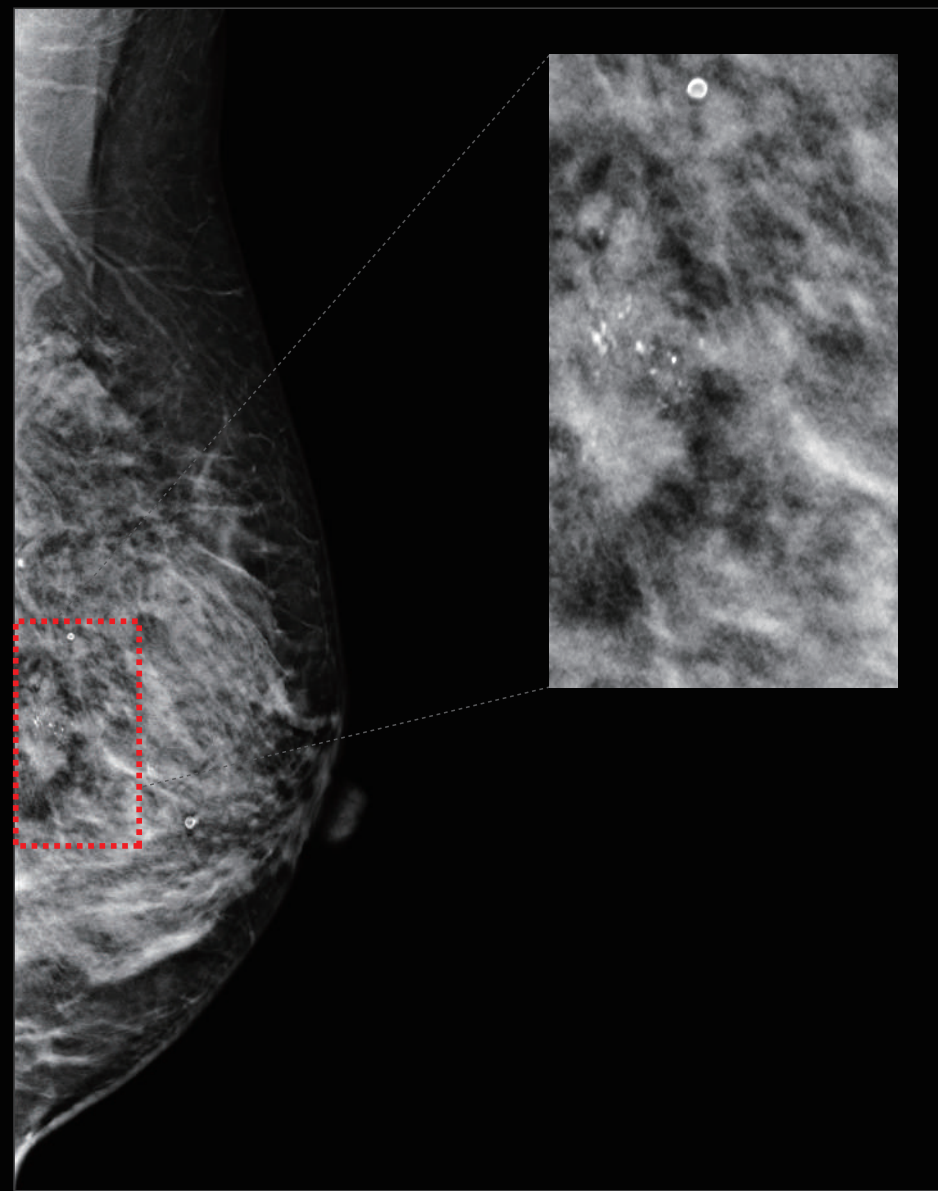
TOMO- Synthesized 2D images



TOMO-Synthesized 3D images



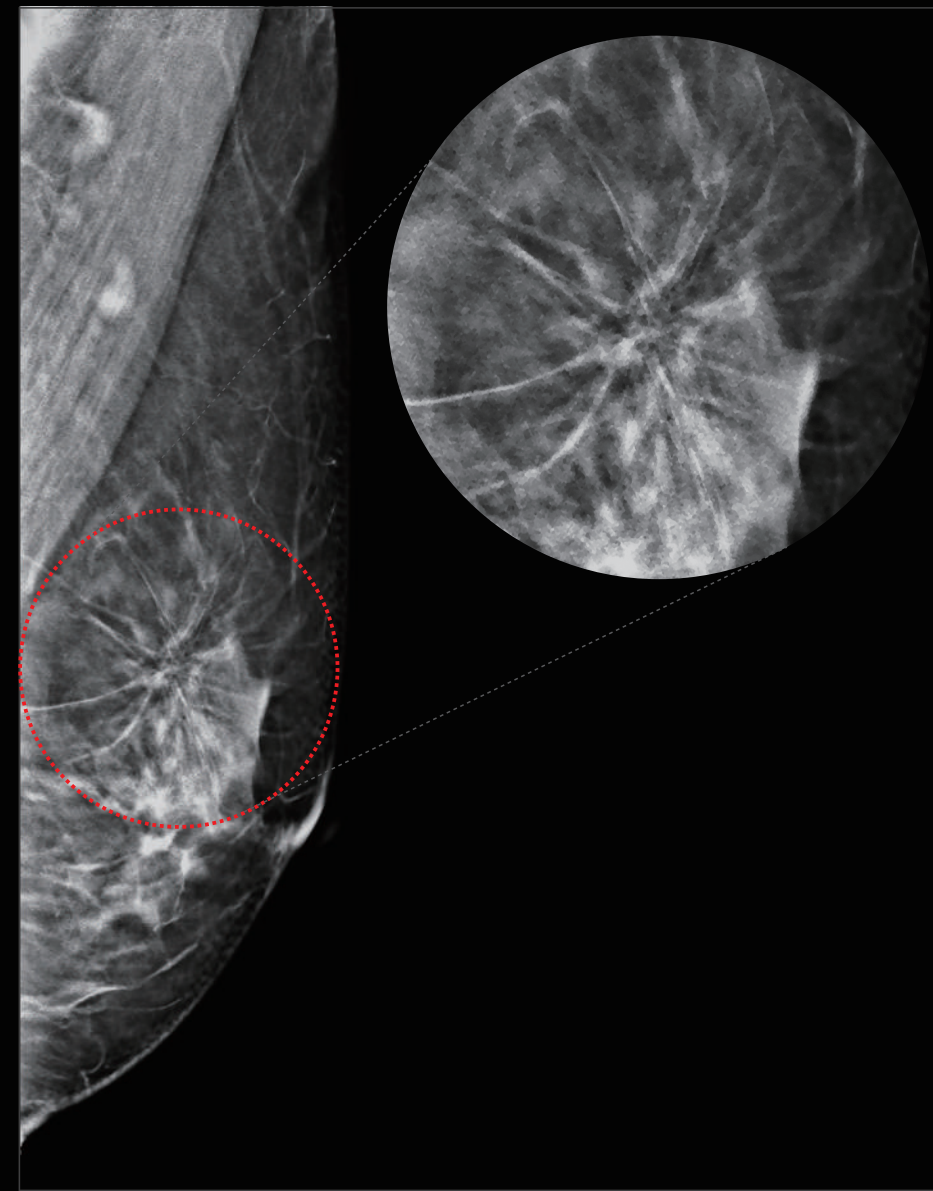
2D images



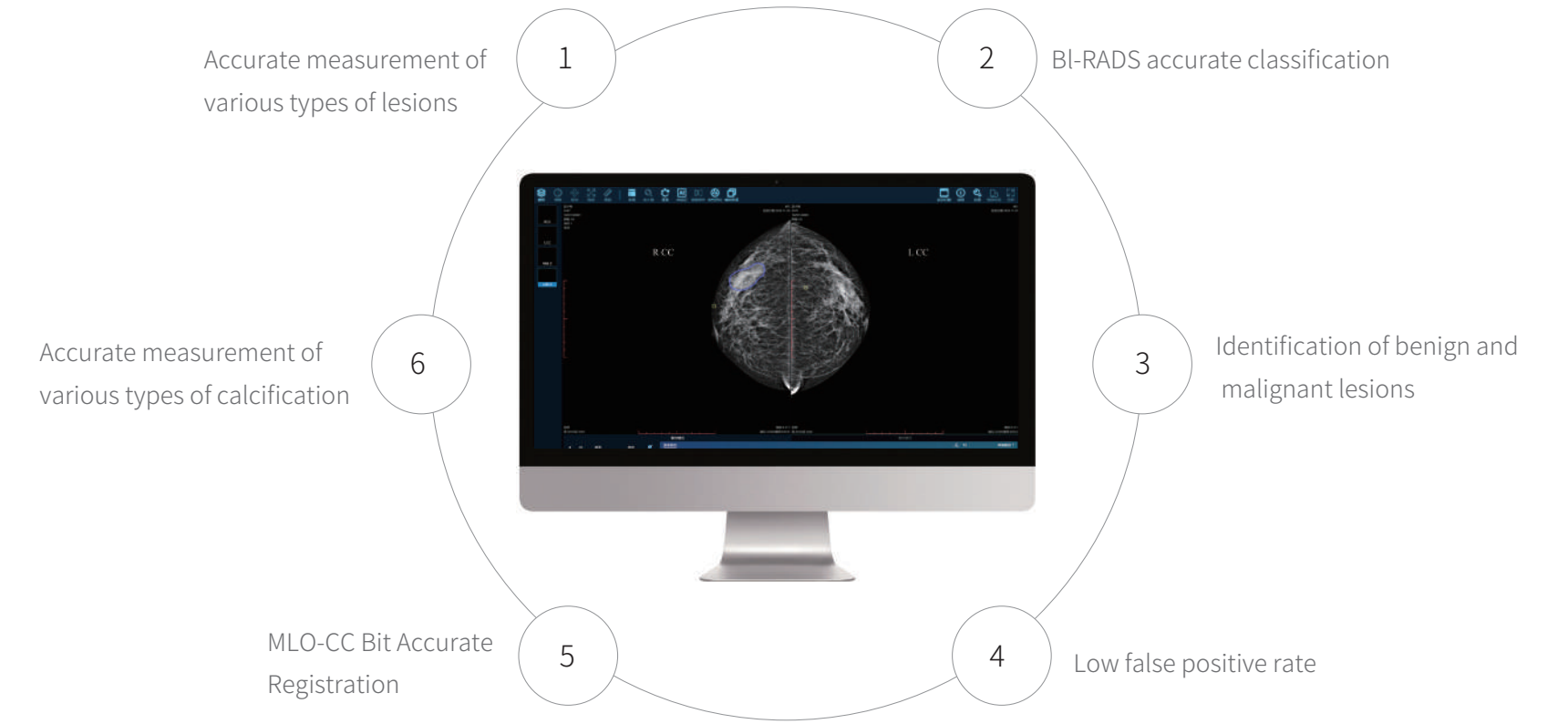
Tomosynthesis images



2D images

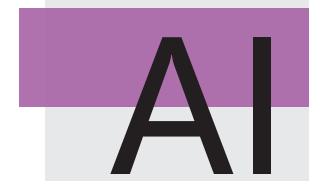
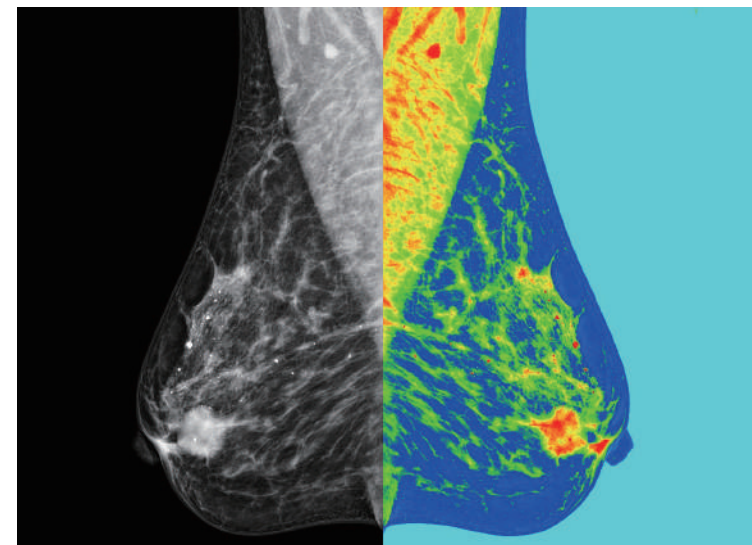


Tomosynthesis images



### Unique Pseudo-color innovative technology

- Helps to visualize tiny, indistinct calcifications and clearly shows the edges of the mass
- Suspicious high-density tissue and surrounding tissue can be distinguished by color highlighting



### Intelligent analysis of mammography images and auto-generated structured reports

#### Report with lump location and type

The list includes mass type, BIRADS grade, benign and malignant prediction, doctor can edit the report with needs, detection rate of lesions and the accuracy rate of benign and malignant are as high as 90%

#### Lump properties include

Lump type, property, gland type and calcification