

Operating Table



ZIRKON

Electric Operating Table



- ZIRKON electric operating table is designed for wide variety of surgical operations, including general operation, obstetrics, urology, ENT, endoscopic, neurosurgery, orthopedics, etc.
- This operating table is electro-mechanical operating table.
- Table frame, side rails and accessories all are made of stainless steel.
- Wide sliding range of table top: 350mm, meet the requirement of X-ray C-arm
- Memory foam mattress—offer comfort for patients and prevent pressure ulcers
- Both hand control and control panel in column (back-up control system) are included
- 2 power supply systems: mains power; battery (table can be used when power failure)
- Automatic 0-position in emergency situations
- Has electric brake casters
- Side rail with European or USA standard

Technical Data

- Height: 730-1030mm
- Length: ≥ 2100 mm
- Width: ≥ 540 mm
- Lateral tilt: $-20^{\circ} / +20^{\circ}$
- Trendelenburg/
Anti Trendelenburg: $25^{\circ} / 30^{\circ}$
- Back section: up $\geq 75^{\circ}$ / down $\geq 10^{\circ}$
- Head section: up $\geq 30^{\circ}$ / down $\geq 45^{\circ}$, detachable
- Leg section: up $\geq 10^{\circ}$ / down $\geq 90^{\circ}$, open $\geq 180^{\circ}$, detachable
- Flex / Reflex : Up $\geq 75^{\circ}$ / down $\geq 190^{\circ}$
- Sliding : ≥ 350 mm
- Kidney Bridge Elevation: ≥ 120
- Safety patient working load: ≥ 200 kg



SPHEN

Electric hydraulic Operating Table

Product details:



(1)



(2)



(3)



(4)



(5)



(6)



(7)

The double joint head plate can be flexible to adjust to multiple angles;

(1)



Leg plate up / down and outward are adjusted by manual ;

(8)

Built-in waist bridge, can be adjusted flexibly by manual handle;

(2)

Both hand remote control and override panel control , more convenient and reliable for operation;

(3)

"Easy click" leg plate controlled both by electro-hydraulic and manual;

(7)

Main power and emergency power,easy operation and emergency handling;

(4)

Large casters ensure excellent maneuverability in all direction;

(5)

Memory foam mattress with antistatic,waterproof and antibacterial design;

Column controlled by the hydraulic system has excellent stability;

(6)

Standard high penetration table plate for X-ray;

Carbon fiber table plate (optional) offers firmness, portability, aesthetics and total transparency of the area being imaged;



ALEXANDRIT

Electric Operating Table



Technical Data

Tabletop Length/width:	2070/550mm
Tabletop Elevation (up/down):	1000/700mm
Trendelenburg/Anti-tredelenburg:	25°/25°
lateral tilt:	15°/15°
Head plate adjustment:	45°/90°
Leg plate adjustment:	up:15° down:90°, outward:90°
Back plate adjustment:	+75°/-20°
kidney bridge:	110mm
Sliding:	300mm

- ALEXANDRIT Electric Operating Table can be used for wide variety of surgical operations, including general operation, obstetrics, urology, ENT, endoscopic, neurosurgery, orthopedics, etc.
- - The long sliding of table top 300mm could meet the requirement for X-ray and C-arm
- - Adopting micro touch remote control could adjust any movement flexible
- - High automation.Low noise.High reliability
- - Key parts imported from abroad with high performance

CITRIN

Electric Operating Table



Technical Data

Length of table top:	2000mm
Width of table top:	500mm
Safety patient working load:	$\geq 150\text{kg}$
Height:	700-900mm
Lateral tilt:	$-20^\circ / +20^\circ$
Trendelenburg/ Anti Trendelenburg:	$20^\circ / 20^\circ$
Back section:	up $\geq 80^\circ$ / down $\geq 10^\circ$
Head section:	up $\geq 30^\circ$ / down $\geq 90^\circ$, detachable
Leg section:	down $\geq 90^\circ$ / open $\geq 180^\circ$, detachable
Kidney Bridge Elevation:	≥ 110

- CITRIN Electric operating table is designed for wide variety of surgical operations, including general operation, obstetrics, urology, ENT, etc.
- The operating table is electro-mechanical operating table.
- Electric control adjustments: height, lateral tilt, trendelenburg and reverse trendelenburg, back section up and down.
- Table frame, side rails and accessories all are made of stainless steel.
- 2 power supply systems: mains power; battery (table can be used when power failure)
- Kidney bridge elevator adjusted by a crank mechanism
- Wide range of accessories for various operations

HESSONIT

Mechanic Operating Table



Technical Data

Table height (mm)	710~910
Length and width (mm)	1950*480
Reversed trendelenburg	20°
Trendelenburg	25°
Left inclining angle	15°
Right inclining angle	15°
Upward folding angle of back rest	85°
Upward folding angle of head rest	40°
Downward folding angle of head rest	50°
Downward folding angle of leg rest	90°
Lifting height of waist bridge (mm)	120

- HESSONIT comprehensive operating table can be applied to general surgical, obstetrics, urology, ENT, minimally invasive surgery, endoscopic, chest, kidney, neurosurgery, orthopedics backbone and other general purposes;
- The lifting of the table is droved by oil pump;
- The trendelenburg, lateral tilt left/ right, backplate upward by air cylinder;
- The shell of the base is stainless steel;
- Well sealed mattress in order to ensure comfort to patient and clinical sterilized easy;
- Somatological design, artistic and easy to clean and sterilization;
- The table furnished with a lot of practical standard accessories to satisfy different requirement in operation, detachable clamps of accessory, easy to use;
- With brake under the table, the whole unit is very easy to transport, move or clean.

TANSANIT

Mechanic Operating Table



Technical Data

Tabletop Length/width	2010mm/5000mm
Tabletop Elevation(up/down)	970/670mm
Trendelenburg/Anti-tredelenburg	25°/30°
lateral tilt	20°/20°
Head plate adjustment	60°/75°
Leg plate adjustment	up: 15°,down:90°, outward:90°
Back plate adjustment	+70°/-30°
kidney bridge	120mm

- Designed for wide variety of surgical operations, including general operation, obstetrics, urology, ENT, endoscopic, neurosurgery, orthopedics, etc.
- The table frame is made of anti-corrosion and anti-rusting 304 stainless steel
- The easy control back and leg section gas spring from Germany
- Four glide, antistatic large castors enable free wheeling without noise. Two of which are swiveling ensure the mobility easily.
- All sealed mattress are easily removable and facilitate cleaning
- Optimally base design provide wide space for the use. Along with extreme stability

SILLIMANIT

Mechanic Operating Table



Technical Data

Tabletop Length/width	2010mm/500mm
Tabletop Elevation(up/down)	1010/760mm
Trendelenburg/anti- Trendelenburg	22°/22°, 25°/25° is optional
Lateral Tilt	20°/20°
Head plate adjustment	+60°/-70°
Leg plate adjustment	up: 15° ,down: 85° ,outward:90°
Back plate adjustment	+75°/-15°
Kindey bridge	120mm

- Designed for wide variety of surgical operations, including general operation, obstetrics, urology, ENT, endoscopic, neurosurgery, orthopedics, etc.
- The hydraulic lifting by foot pedal and movements operated by head position
- The table base and column cover all made by premium 304 stainless steel
- The table top is made of composite laminate for X-ray which ensures the high definition image.
- All sealed mattress are easily removable and facilitate cleaning

SMARAGD

Mechanic Operating Table



Technical Data

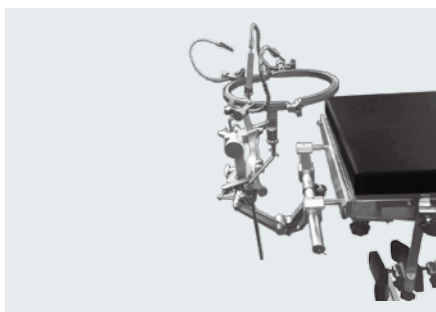
Tabletop Length/width	1970/500mm
Tabletop Elevation(up/down)	970/750mm
Trendelenburg/anti- Trendelenburg	22°/22°
Lateral Tilt	18°/18°
Head plate adjustment	+45°/-90°
Leg plate adjustment	up:0° down: 90°
Back plate adjustment	+75°/-18°
Kindy bridge	120mm

- Designed for wide variety of surgical operations, including general operation, obstetrics, urology, ENT, endoscopic, neurosurgery, orthopedics, etc.
- - The hydraulic lifting, all movements operated by head position
- - The table base and column cover all made by premium 304 stainless steel
- - The “T-shape” table base design according with ergonomics principle to offer enough space for all kind of surgery.

ZUBEHÖR



Neurosurgery Head Rest



Neurosurgery Head Rest



Head Rest



1008 Orthopedic Extension



98 Orthopedic Extension



1009 Orthopedic Extension



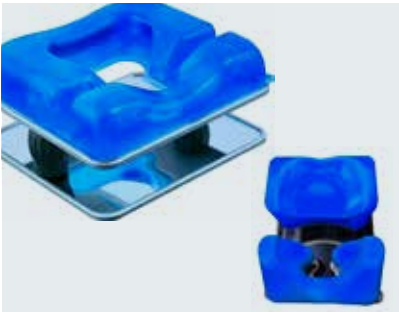
Stirrup Leg Holders



Donut Head Pad



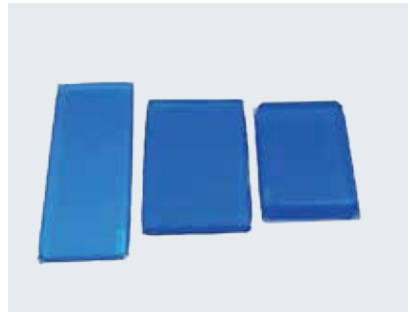
Horseshoe Head Pad



Prostrate Head Pad



Prostrate Head Pad



Universal Square Pad



H-1 Over Bed Table



H-3 Over Bed Table



Baby Crib